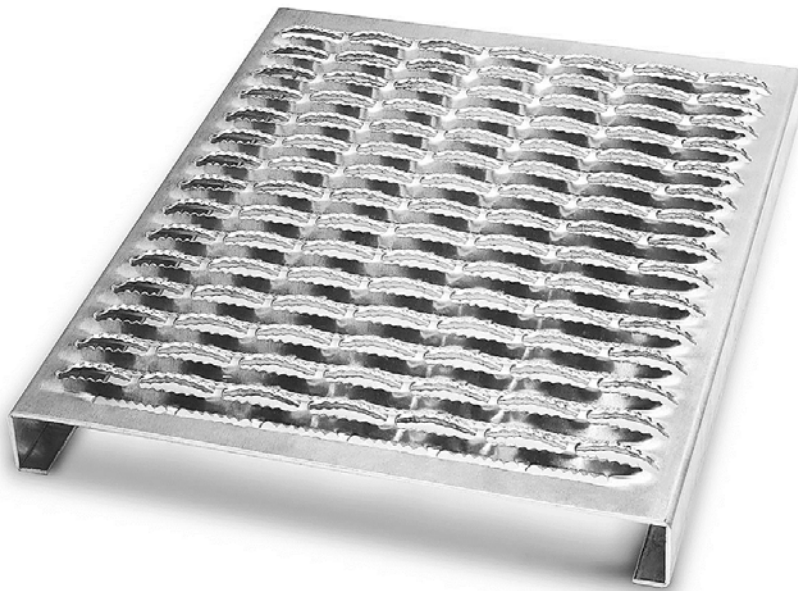


DURATRAY

Walkway

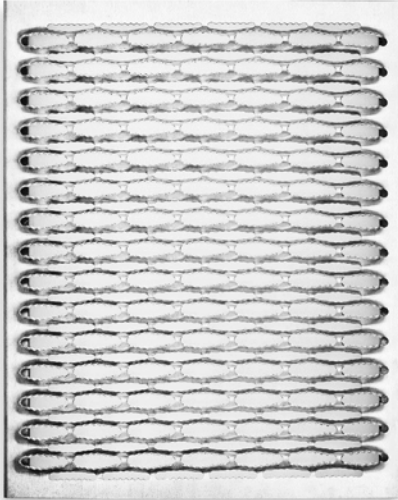


DURATRAY

Walkway CONTACT ADDRESS

AQUANAUTIC LIGHTING & EQUIPMENT CO.,LTD.
24/19 MOO.7, LAMPO , BANGBUATHONG
NONTABURI
T. 02-194-1138-9 F. 02-158-4661
E-MAIL : sales@dura-tray.com





ADVANTAGES OF DIAMOND SAFETY GRATINGS

Metal safety grating often referred to as plank grating, is a rugged, slip-resistant product that facilitates drainage.

1. Exceeds specifications for slip resistance
2. Provides slip resistance in all directions
3. Large open area
4. Self clearing, minimum maintenance
5. Lightweight,
6. Easy to handle and install.

APPLICATIONS :

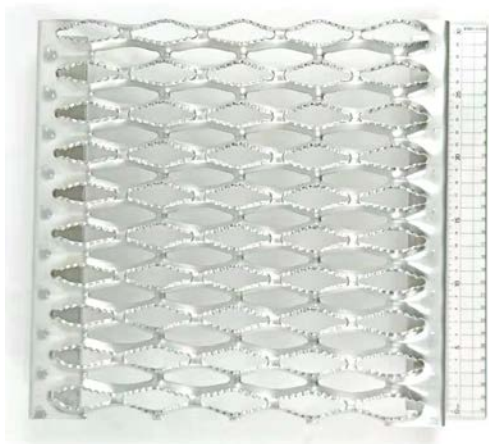
Diamond safety grating plank is widely used for work platforms, catwalks, transportation servicing areas and vehicle steps.

WALKWAY FEATURES:

1. 4-1/2" integral toe-boards prevent tools and other material from falling over the edge. Ideal for use in above-ground applications.

2. Ideal for use as elevated catwalks for quarries, grain handling equipment, conveyors etc.

3. The aluminum alloy can supply lighter weight than the pre-galvanized steel diamond safety gratings. They are perfect packed in pallet to ensure the safety transport.



DIAMOND SAFETY GRATINGS

1. Diamond safety gratings feature a unique, one-piece construction that is lightweight, load-carrying capabilities. Grating products provide in plant safety in the form of open flooring, catwalks, platforms, stair treads and walkways. The surface pattern is a diamond configuration which allows for the passage of light and waste materials.

Diamond safety grating plank has serrated diamond shaped openings with serrated edges, making them slip-resistant in every direction under all conditions. This is a better and economic alternative against conventional bar gratings and chequered plates.

SPECIFICATIONS OF DIAMOND-STRUT SAFETY GRATINGS

Material :

- Pre – galvanized carbon steel
- Carbon steel
- Aluminum 1060 3003 5052 5005
- Stainless steel 304 or 316

Diamond safety grating plank has different diamond quantities to suit different applications. Commonly, it can be 2-diamond, 3-diamond, 4-diamond, 5-diamond, 8-diamond and 10-diamond

Width (mm.)	Diamond	Channel Depth (mm.)	Weight (Kgs.)	Length (mm.)	Thickness (mm.)	Material
120	2	35		3900	2.0mm.	Pre – gal carbon steel
200	3	35		3900	2.5mm.	Carbon steel
250	4	35		3900	3.0mm.	Alu alloy 3003 5052
** 300	5	35	9.11	3900	Or	Stainless steel 304/316
** 390	6	35	11.11	3900	customized	
500	8	35		3900		
600	10	35		3900		

**300 & 390 : STOCK AVAILABLE



CONNECTOR

Material : Aluminium



M - CLAMP

Material : HDG

